

MONTHLY MEMBERSHIP PROGRESS REPORT

LOCATION WASHINGTON

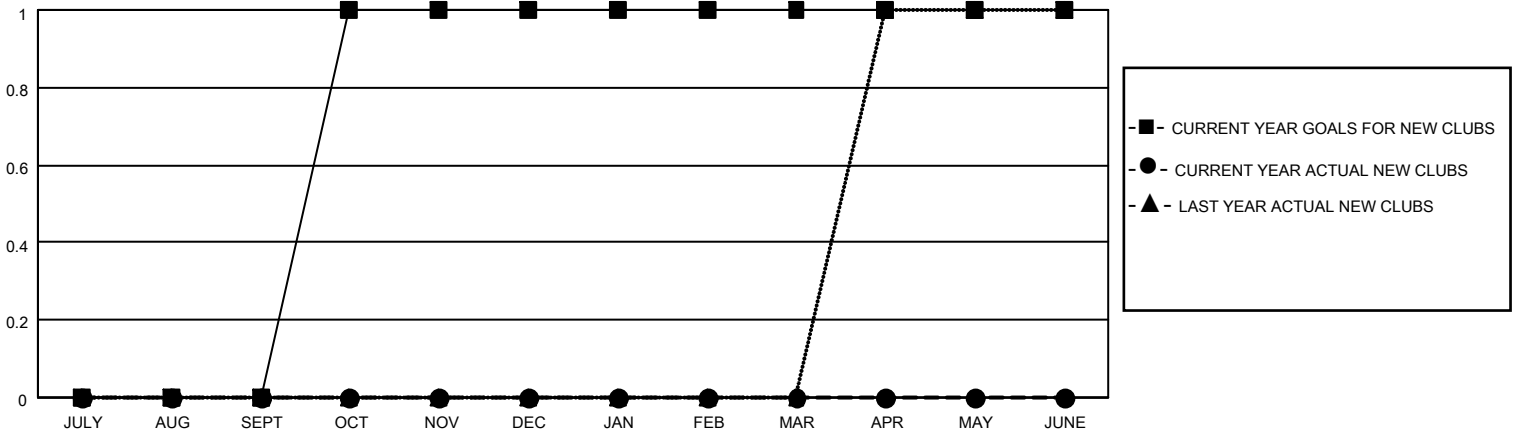
District 19 D

Results as of: 1/31/2022

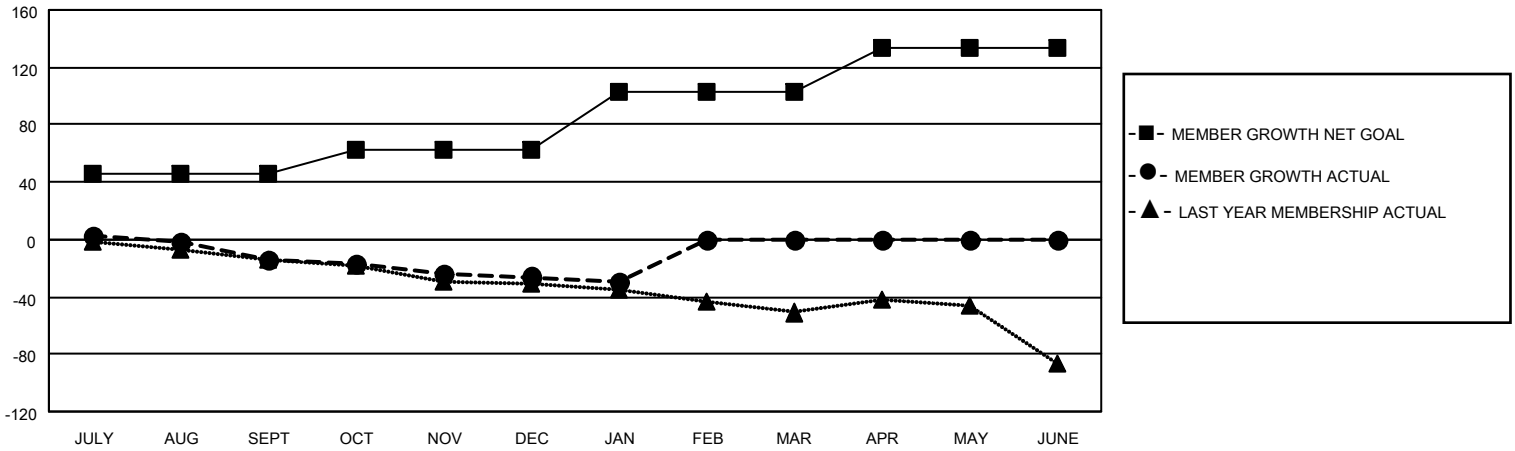
Clubs			
RESULTS FOR 2021-2022			
QUARTER	NEW CLUB GOAL	NEW CLUBS	DROPPED CLUBS
JULY/AUG/SEPT	0	0	0
OCT/NOV/DEC	1	0	0
JAN/FEB/MAR	0	0	0
APR/MAY/JUNE	0	0	0

Members			
RESULTS FOR 2021-2022			
QUARTER	MEMBER GROWTH NET GOAL	MEMBER GROWTH ACTUAL	DROPPED MEMBERS ACTUAL (including transfers)
JULY/AUG/SEPT	46	17	30
OCT/NOV/DEC	17	34	43
JAN/FEB/MAR	40	4	7
APR/MAY/JUNE	31	0	0

GOALS AND ACTUAL NEW CLUBS CUMULATIVE



GOALS AND ACTUAL MEMBERS CUMULATIVE



DROPPED CLUBS: 0

20 CLUBS OF 46 ADDED 1 OR MORE NEW MEMBERS

GENDER DISTRIBUTION

MALE	555 (55.06%)
FEMALE	453 (44.94%)
NON BINARY	0 (0.00%)
PREFER NOT TO ANSWER	0 (0.00%)

DROPPED MEMBERS

[CLICK HERE FOR CUMULATIVE MEMBERSHIP DATA](#)

DECEASED	17
CLUB CANCELLED	0
OTHER	63
TOTAL	80

TOTAL FAMILY UNIT MEMBERS 287

FAMILY MEMBERS PAYING HALF DUES 145